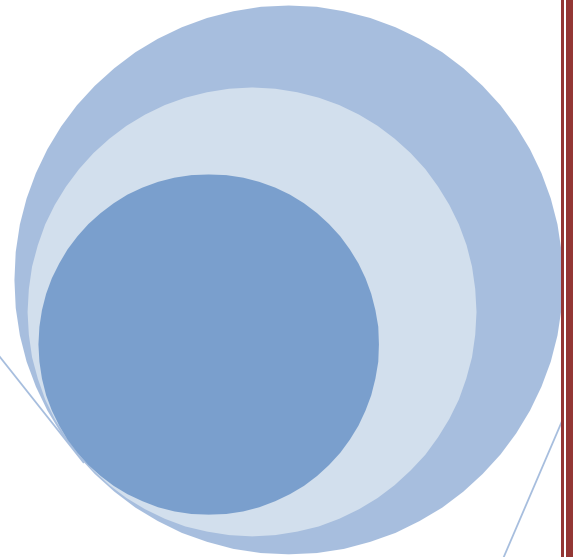
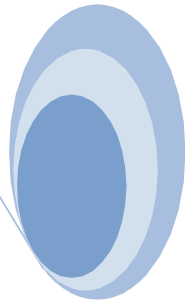
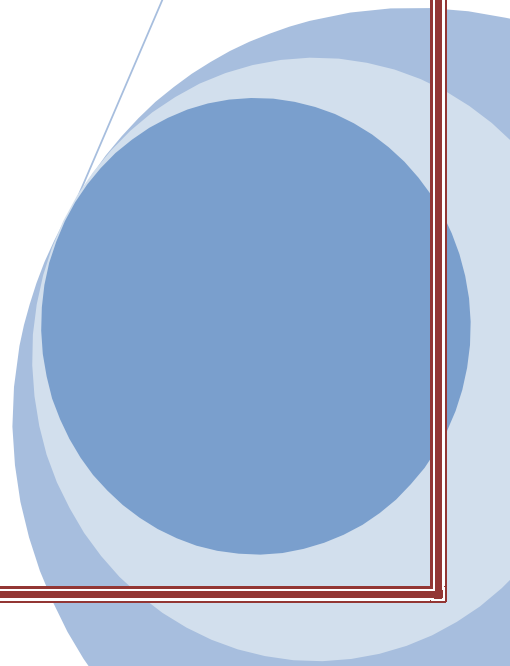


ENTERPRISE SOFTWARE SOLUTIONS LAB



PRICE LIST



Smart Cards/Proximity Cards





- Thick proximity clamshell card 125 KHz 4100 chip -----Price: Rs. 8.67/-
- Thin proximity ISO card 125 KHz 4100 chip -----Price: Rs. 10.35/-
- Proximity13.56 MHz (1K MF)-----Price: Rs.11.22/-
- MiFare 1K S50 (Philips,NXP) card 13.56 MHz -----Price: Rs. 31.07/-
- Mifare 4K S70 (Philips,NXP) card 13.56 MHz -----Price: Rs. 55.25/-
- Mifare Desi Fire 4K card -----Price :Rs.95.00/-


Also available Contact less Smart Cards List

MIFARE 1 S50 - PHILIPS	EM4135 (13.56M)	ATA5590 UHP - ATMEL
MIFARE 1 S70 - PHILIPS	EM4222 UHF	SR-176 - ST
MIFARE 1 Ultra light - PHILIPS	EM4223 UHF	T5557 - ATMEL
I-Code1, 2, SLI * - PHILIPS	EM4422 UHF	88RF256-12 - ATMEL
HITAG1, 2, S * - PHILIPS	EM4100	LEGIC MIN256
MIFARE D40 - PHILIPS	EM4102	INSIDE - 2K *
I-Code UID - PHILIPS	EM4450	INSIDE - 16K *
I-Code EPC 13.56M - PHILIPS	EM4035 (13.56M)	SLE66R35 - SEIMENS

Accessories

EM LOCK WITH LED	FEATURES
 <p>Rs.1225/-</p>	<ul style="list-style-type: none"> <input type="checkbox"/> Magnet(L X W X H): 250 X 42 X 26 mm <input type="checkbox"/> Armature Plate(L X W X H): 180 X 38 X 11 mm <input type="checkbox"/> Current Drawn :400 mA@12 VDC <input type="checkbox"/> Low current consumption <input type="checkbox"/> Holding Force : 230 Kg <input type="checkbox"/> Temperature : 10°C - 55°C <input type="checkbox"/> Operating Humidity : 0%-95% (Non-Condensing) <input type="checkbox"/> Optional Accessories : L Bracket ,U Bracket ,ZL Bracket ,U Bracket for Glass Door

EM Lock With Feedback	FEATURES
 <p>Rs.1439/-</p>	<ul style="list-style-type: none"> <input type="checkbox"/> Magnet(L X W X H): 250 X 41 X 26 mm <input type="checkbox"/> Armature Plate(L X W X H): 180 X 38 X 11 mm <input type="checkbox"/> Mounting Plate(L X W X H): 250 X 25.4 X 6.3 mm <input type="checkbox"/> Current Consumption : 500mA/250mA <input type="checkbox"/> Voltage: 12 V/24 V <input type="checkbox"/> Voltage Tolerance : 115% <input type="checkbox"/> Holding Force : 230 Kg <input type="checkbox"/> Holding Capacity : 600 lbs <input type="checkbox"/> Temperature : 10°C - 55°C <input type="checkbox"/> LED Magnetic bond sensor <input type="checkbox"/> Optional Accessories : L Bracket ,U Bracket ,ZL Bracket ,U Bracket for Glass Door

Bolt Lock H1096 AF	FEATURES
<p>(Without Bracket)</p>  <p>Rs.1468</p>	<ul style="list-style-type: none"> <input type="checkbox"/> Cutout(L X W): 212 X 35 mm <input type="checkbox"/> Bracket(L X W X H): 90 X 25 X 3 mm <input type="checkbox"/> Current Draw : (Start)950mA ,(Standby)120mA <input type="checkbox"/> Dual Voltage: DC 12 V <input type="checkbox"/> Bolt : 15.5 mm diameter Stainless Steel ,Out throw 15 mm <input type="checkbox"/> Net Weight : 0.9 Kg <input type="checkbox"/> Holding Capacity : 600 lbs <input type="checkbox"/> Temperature : 10°C - 55°C <input type="checkbox"/> LED Magn etic bond sensor <p>Optional:</p> <p>Bolt Lock Bracket U1096 Rs. 392/-</p>

Strike Lock



Rs.784/-

FEATURES

- Face Plate(L X W X H): 205 X 35 X 40 mm
- Strike Plate(L X W X H): 90 X 25 X 2 mm
- Cover Plate(L X W X H): 215 X 40 X 0.7 mm
- Current Draw : (Start)950mA,(standby)120mA
- Dual Voltage: DC 12 V
- Bolt : 16 mm diameter , 16 mm Stainless Steel
- Net Weight : 0.8 Kg
- Holding Capacity : 600 lbs
- Temperature : 10°C - 55°C
- LED Magnetic bond sensor
- Optional Accessories :EL-BK-L600 L Bracket, EL-BK-U600 U Bracket, EL-BK-Z600 ZL Bracket

Glass Door EM Lock

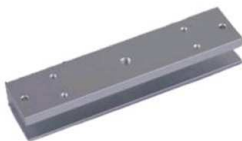


Rs.2839/-

FEATURES

- Cutout(L X W): 212 X 35 mm
- Bracket(L X W X H): 90 X 25 X 3 mm
- Current Draw : (Start)950mA ,(Standby)120mA
- Dual Voltage: DC 12 V
- Bolt :15.5 mm diameter Stainless Steel, Out throw 15mm
- Net Weight : 0.9 Kg
- Holding Capacity : 600 lbs
- Temperature : 10°C - 55°C
- LED Magnetic bond sensor
- Optional Accessories : L Bracket ,U Bracket ,ZL Bracket U Bracket for Glass Door

U-Bracket GD/GF



Rs.342/-

L-Bracket GD/GF



Rs.342/-

Z-L-Bracket GD/GF



Rs.636/-

Rs.735/-

Titania: Power Supply



- 5 Vlt 2 AMP : Rs.500/-
- 12Vlt 0.5AMP : Rs.150/-
- 12Vlt 1AMP : Rs.175/-
- 12Vlt 2AMP : Rs.225/-

No Touch Exit Sensor



Rs.784/-

- Contact Rating : 3 A/AC 120 V, Dc 30 V
- Life : 5,00,000 lbs
- Temperature : 20°C - 55°C
- Weight : 85 g
- Optional Accessories : Gate ,Door ,Exit ,Automation Control

Exit Switch/Button



Rs.342/-

- Max Current : 3A/36 VDC(No/NC) output
- Size (L X W): 91 X 28 mm

Fingerprint Based Time & Attendance

H3006/ H3

- 32 Bit high speed embedded processor
- 500FP Templates & 30000 Transaction
- 500 DPI Optical Sensor
- Communication: USB
- Inbuilt Battery Backup
- eTimeTrackLite T&A desktop Software with basic payroll/ Visitor /canteen Management free for 500 users.
- Supporting database- MS Access /SQL/Oracle



Rs.4425/-

E9999/ E9

- 32 Bit high speed embedded processor
- 1500FP Templates & 50000 Transaction
- 500 DPI Optical Sensor
- Identification Speed: <=2Sec
- FAR: <=0.0001%
- FRR: <=1%
- Communication: TCP/IP,USB
- eTimeTrackLite T&A desktop Software with basic payroll/ Visitor /canteen Management free for 500 users.
- Supporting database- MS Access /SQL/Oracle

Optional :

- Proximity Card Reader : Rs.500/-extra



Rs.4550-

6161T/ T4

- 32 Bit high speed embedded processor
- 3.0" Digital color TFT
- 3000FP Templates & 1,00,000 Transaction
- 500 DPI Optical Sensor
- Identification Speed : <=2 Sec
- FAR: <=0.0001%
- FRR: <=1%
- Communication: TCP/IP,RS232/485
- eTimeTrackLite T&A desktop Software with basic payroll/ Visitor /canteen Management free for 500 users.
- Supporting database- MS Access /SQL/Oracle

Optional :

- Proximity Card Reader : Rs.500/-extra

**Rs.5690/-****6030/ X628**

- 32 Bit high speed embedded processor
- 3.0" Digital color TFT
- 3000FP Templates & 1,00,000 Transaction
- 500 DPI Optical Sensor
- Identification Speed : <=2 Sec
- FAR: <=0.0001%
- FRR: <=1%
- Communication: TCP/IP,RS232/485/USB
- eTimeTrackLite T&A desktop Software with basic payroll/ Visitor /canteen Management free for 500 users.
- Supporting database- MS Access /SQL/Oracle

Optional :

- Proximity Card Reader : Rs.500/-extra

**Rs.6640/-**

X990

- 32 Bit high speed embedded processor
 - 3.0" Digital color TFT
 - 3000FP Templates & 1,00,000 Transaction
 - 500 DPI Optical Sensor
 - Communication: TCP/IP,RS232/485/USB
 - eTimeTrackLite T&A desktop Software with basic payroll/ Visitor /canteen Management free for 500 users, Supporting database- MS Access/SQL/Oracle
 - eTimeTrackLite T&A web based Software trial for 200 Users & 5 devices available
- Support GPRS & Push Data devices (X990 / U990 / I Clock 990),
Supporting database- SQL/Oracle



Optional :

- Proximity Card Reader : Rs.500/-extra
- Smart Card Reader : Rs.1400/-extra
- HID(iProx) card reader : Rs.4000/-extra
- Internal Battery Back-up: Rs.1000/-extra
- Wifi : Rs.2000/-extra, GPRS : Rs.6000/-extra
- Push Data Technology :Rs.2000/- extra

Rs.6640/-

FTA 5454

- 32 Bit high speed embedded processor
- 1500/3500FP Templates & 50000 Transaction
- 500 DPI Optical Sensor
- Identification Speed : <=2 Sec
- FAR: <=0.0001%
- FRR: <=1%
- Communication: TCP/IP,RS232/485/USB
- Card Reader: Inbuilt Proximity Card reader
- eTimeTrackLite T&A desktop Software with basic payroll/ Visitor / canteen Management free for 500 users.
- Supporting database- MS Access /SQL/Oracle



Optional :

- Mifare card reader : Rs.1000/-

Rs.7115/-

FTA 0099/ 1818

- 32 Bit high speed embedded processor
 - 3000FP Templates & 1,00,000 Transaction
 - 500 DPI Optical Sensor
 - Identification Speed : ≤ 2 Sec
- FAR: $\leq 0.0001\%$
- FRR: $\leq 1\%$
 - Communication: TCP/IP,RS232/485/USB
 - Card Reader: Inbuilt Proximity Card reader
 - eTimeTrackLite T&A desktop Software with basic payroll/ Visitor /canteen Management free for 500 users.
Supporting database- MS Access /SQL/Oracle

Optional :

- Mifare card reader : Rs.1000/-
- HID(iProx) card reader : Rs.4000/-



Rs.7115/-

FTA S-20

- 3000FP Templates & 1,00,000 Transaction
- Q-Touch Keypad
- 3.0" Digital color TFT
- 500 DPI Optical Sensor
- Communication: TCP/IP,RS232/485/USB
- 32 Bit High speed embedded processor
- Card Reader: Inbuilt Proximity Card reader
- eTimeTrackLite T&A desktop Software with basic payroll/ Visitor /canteen Management free for 500 users.
Supporting database- MS Access /SQL/ Oracle

Optional :

- Smart Card Reader : Rs.1000/-extra
- HID(iProx) Card Reader : Rs.4000/-extra



Rs.7590/-

Fingerprint Based Time & Attendance/Access Control system

U990

- 32 Bit high speed embedded processor
- 3000FP Templates & 100000 Transaction
- 500 DPI Optical Sensor, 3.0" Digital color TFT
- Communication: TCP/IP,RS232/485/USB
- Support external 26 bit Weigand reader for exit (KR100/essl 101HE)
- Support external Fingerprint reader F12**
- eTimeTrackLite T&A desktop Software with basic payroll/ Visitor /canteen Management free for 500 users, Supporting database- MS Access /SQL/Oracle
- eTimeTrackLite T&A web based Software trial for 200 Users & 5 devices available Support GPRS & Push Data devices (X990 / U990 /I Clock 990), Supporting database- SQL/Oracle



Rs.7125/-

Optional :

- Proximity Card Reader : Rs.500/-extra
- Smart Card Reader : Rs.1400/-extra
- HID (iProx) Card reader: Rs.4000/- extra
- Internal Battery Back-up: Rs.1000/-
- Wifi : Rs.2000/-extra, GPRS : Rs.6000/-extra
- Push Data Technology :Rs.2000/- extra



Rs.3800/-

FBAC F7A2

- 32 Bit high speed embedded processor
- 2200FP Templates & 50000 Transaction
- 500 DPI Optical Sensor
- Communication: TCP/IP,RS232/485
- Support external No Touch & Push Button
- Weigand out to connect 3rd party Controller
- eTimeTrackLite T&A desktop Software with basic payroll/ Visitor /canteen Management free for 500 users. Supporting database- MS Access /SQL/Oracle

Optional :

- PSU : Rs.175/-extra(12V 1Amp)
- PSU:Rs.225/- extra(12V 2 Amp)



Rs.6640/-

FBAC 2727/9090

- 32 Bit high speed embedded processor
- 2200FP Templates & 50000 Transaction
- 500 DPI Optical Sensor
- Communication: TCP/IP,RS232/485
- Support external No Touch & Push Button
- Weigand out to connect 3rd party Controller
- eTimeTrackLite T&A desktop Software with basic payroll/ Visitor /canteen Management free for 500 users. Supporting database- MS Access /SQL/Oracle



Rs.8535/-

Optional :

- PSU : Rs.175/-extra(12V 1Amp)
- PSU:Rs.225/- extra(12V 2 Amp)

FBAC-9/ F9

- User capacity:1500;Transaction Storage:50000
- Inbuilt proximity card reader
- Communications:RS232/485,TCP/IP/USB
- Sensor: Optical sensor 500 DPI
- Identification Speed : <=2 Sec
- FAR: <=0.0001%
- FRR: <=1%
- Support external 26 bit Weigand reader for exit (KR100/essl 101HE)
- Weigand out to connect 3rd party Controller
- Support external Fingerprint reader F12**
- eTimeTrackLite T&A desktop Software with basic payroll/ Visitor /canteen Management free for 500 users.
- Supporting database- MS Access /SQL/Oracle



Rs.9000/-

Optional:

- Mifare Card reader : Rs.1000/-extra
- HID card reader : Rs.4000/-extra
- PSU : Rs.175/-extra(12V 1Amp)
- PSU:Rs.225/- extra(12V 2 Amp)

FBAC 603/ 702E

- User capacity:1500;Transaction Storage:50000
- Inbuilt proximity card reader
- Electric lock control: Directness relay output12VDC
- Communications:RS232/485,TCP/IP/USB
- Sensor: Optical sensor 500 DPI
- Support external 26 bit Weigand reader for exit (KR100/essl 101HE)
- Weigand out to connect 3rd party Controller
- Support external Fingerprint reader F12**
- eTimeTrackLite T&A desktop Software with basic payroll/ Visitor /canteen Management free for 500 users. Supporting database- MS Access /SQL/Oracle



Rs.7850/-

Optional:

- Mifare Card reader : Rs.1000/-extra
- HID card reader : Rs.4000/-extra
- PSU : Rs.175/-extra(12V 1Amp)
- PSU:Rs.225/- extra(12V 2 Amp)

MA-3006

- Size: 180(L)*82(W)*55(H)mm
- User capacity:1000; Card Capacity:30,000,
- Transaction Storage:30,000
- Inbuilt proximity card reader
- Access Control: 3rd Party electric lock, door sensor, exit button, alarm
- Support external 26 bit Weigand reader for exit (KR100/essl 101HE)
- Communications:RS232/485,TCP/IP/USB
- Sensor: Optical sensor 500 DPI
- eTimeTrackLite T&A desktop Software with basic payroll/ Visitor /canteen Management free for 500 users. Supporting database- MS Access /SQL/Oracle



Rs.6165/-

Optional:

- Mifare Card reader : Rs.1000/-extra
- PSU : Rs.175/-extra(12V 1Amp)
- PSU:Rs.225/- extra(12V 2 Amp)

702E with F12

- User capacity:1500;Transaction Storage:50000
- Inbuilt proximity card reader
- Electric lock control: Directness relay opt12VDC
- Communications:RS232/485,TCP/IP/USB
- Sensor: Optical sensor 500 DPI
- Support external biometric exit reader (KR100/ essl 101HE)
- Support external Fingerprint reader F12**
- eTimeTrackLite T&A desktop Software with basic payroll/ Visitor /canteen Management free for 500 users. Supporting database- MS Access /SQL/Oracle



Rs.7850/-

Optional:

- Mifare Card reader : Rs.1000/-extra
- HID card reader : Rs.4000/-extra
- F12 With Proximity card reader : Rs.3800/-
- PSU : Rs.175 extra(12V 1Amp)
- PSU:Rs.225/- extra(12V 2 Amp)

KR100

Rs.850/-

F12

Rs.3800/-



S900

- Rugged Scratch-resistant Secugen sensor
- User Capacity:5000,Transaction Storage :100000
- Card Reader: Inbuilt EM RFID (Proximity) Card reader
- Colour TFT Screen
- Communication: TCP/IP, RS 232/485 ,USB
- Supports external 26 bit Wiegand reader for exit reader (KR100/essl 101HE)
- eTimeTrackLite T&A desktop Software with basic payroll/ Visitor /canteen Management free for 500 users.Supporting database- MS Access /SQL/Oracle



Rs.14700/-

Optional:

- Mifare Card reader : Rs.1000/-extra
- HID card reader : Rs.4000/-extra

I CLOCK 990

- 32 Bit High speed embedded processor
- User Capacity: 10,000 FP
- Transaction Storage: 200,000 Transaction
- Card Reader: Inbuilt Proximity Card reader
- 3.5" Digital color TFT
- Communications: TCP/IP, RS232/485, and USB
- Support external Fingerprint reader F12**
- Support external 26 bit wiegand reader for exit (KR100/ eSSL101HE)
- eTimeTrackLite T&A desktop Software with basic payroll/ Visitor /canteen Management free for 500 users, Supporting database- MS Access /SQL/Oracle
- eTimeTrackLite T&A web based Software trial for 200 Users & 5 devices available
Support GPRS & Push Data devices (X990 / U990 / I Clock 990),
Supporting database- SQL/Oracle



Rs.10900/-

Optional:

- Camera :Rs 1500/- extra
- Internal Battery Back-up(2000MAMP): Rs.1000/-
- Mifare card reader : Rs.1000/- extra, HID card reader(iProx) : Rs.4000/- extra
- Push Data Technology :Rs.2000/- extra,
- Wifi : Rs.2000/- extra,
- GPRS : Rs.6000/-extra
- Secugen sensor optional:Rs.4000

F8

- Dimension(WxHxD): 100 X 196 X 53.5 mm
- User Capacity:2,200 , Transaction Storage :50,000
- Communications: RS232 ,RS485, TCP/IP ,USB
- Temperature : 0°C - 45°C
- Operating Humidity : 20%-80%
- Sensor: OEM Optical Sensor 500 DPI
- Card Reader: Inbuilt Proximity Card reader
- Support external 26 bit wiegand reader for exit (KR100/ essl101He)
- Access Control Interface: 3rd party electric lock, door sensor, exit button, alarm, Door Bell
- Power Supply: 12V DC



Rs.9000/-

Optional:

- Mifare card reader : Rs.1000/- extra, HID card reader(iProx) : Rs.4000/- extra

FACE RECOGNITION SYSTEM/TIME & ATTENDANCE

VF-300

- Image sensor:** special Stereo Dual Sensor
- Display :** 3 inch Touch Screen
- Face Capacity :** 200 (1:N),
- ID Card Capacity:** 10,000
- Logs Capacity :** 100,000
- Algorithm Version :** Face 7.0
- Communication:** TCP/IP, USB Host
- Power supply:** 12v/1.5A
- Verification Speed :** <1S
- Operating temperature :** 0°c ,
- Operating humidity:** 20% - 80%
- Dimensions :** 104.70(L)*160.00(H) *36.00(D) mm



Rs.9500/-

IFACE 101

- Dimension(WxHxD): 193.6 X 147.6 X 101 cm
- Face Capacity: 400 /500(1:N)
- ID Card Capacity: 10,000
- Transaction Storage : 1,00,000
- Camera : High Resolution Infrared Camera
- Communications: RS232 ,RS485, TCP/IP ,USB
- Processor: Multi-Bio CPU 800 MHz
- Power Supply: 12V DC ,3A
- Alogrithm Version: Face 7.0
- Display : 2.0 Inch TFT Screen

Optional:

- Battery at Rs.1000/- extra
- Face capacity: 700(1:G) ,1500/3000(1:1)
- Mifare Card ,Short Message,9 Digit User ,Work Code



Rs.11500/-

IFACE 102

- Dimension(WxHxD): 193.6 X 147.6 X 101 mm
- Face Capacity: 400 /500 (1:N)
- Finger User Storage: 2,000 ,ID Card Capacity: 10,000
- Transaction Storage : 1,00,000
- Camera : High Resolution Infrared Camera
- Communications: RS232 ,RS485, TCP/IP ,USB
- Processor: Multi-Bio CPU 800 MHz
- Power Supply: 12V DC ,3A
- Alogrithm Version: Face 7.0
- Display : 2.0 Inch TFT Screen

Optional:

- Battery at Rs.1000/- extra
- Face capacity: 700(1:G) ,1500/3000(1:1)
- Mifare Card ,Short Message,9 Digit User ,Work Code



Rs.13000/-

FACE RECOGNITION SYSTEM/TIME & ATTENDANCE / ACCESS CONTROL

IFACE 201

- Dimension(WxHxD): 193.6 X 147.6 X 101 mm
- Face Capacity: 500 (1:N)
- ID Card Capacity: 10,000 , Transaction Storage : 1,00,000
- Camera : High Resolution Infrared Camera
- Communications: RS232 ,RS485, TCP/IP ,USB
- Processor: Multi-Bio CPU 800 MHz
- Access Control Interface: 3rd party Electric lock, Door Sensor, Exit button
- Power Supply: 12V DC ,3A
- Alogrithm Version: Face 7.0
- Display : 4.3 Inch TFT Screen

Optional:

- Battery at Rs.1000/- extra
- Face capacity:700(1:G) ,1500/3000(1:1) optional
- Mifare Card ,Short Message,9 Digit User ,Work Code
- Push Data Technology Rs.2000/-
- Wifi : Rs.2000/- extra,
- GPRS : Rs.6000/-extra



Rs.13000/-

IFACE 202

- Dimension(WxHxD): 193.6 X 147.6 X 101 mm Display : 4.3 Inch TFT Screen
- Face Capacity: 500 (1:N)
- Fingerprint Capacity: 2000 , ID Card Capacity: 10,000
- Transaction Storage : 1,00,000
- Camera : High Resolution Infrared Camera
- Communications: RS232 ,RS485, TCP/IP
- Processor: Multi-Bio CPU 800 MHz
- Fingerprint Sensor: Optical Fingerprint Sensor
- Access Control Interface: 3rd party Electric lock, Door Sensor, Exit button
- Power Supply: 12V DC ,3A



Rs.14000/-

Optional:

- Battery at Rs.1000/- extra
- Push Data Technology Rs.2000/-
- Wifi : Rs.2000/- extra,
- GPRS : Rs.6000/-extra
- Face capacity:700(1:G),1500/3000(1:1)
- Mifare Card ,Short Message,9 Digit User ,Work Code

IFACE 302

- Dimension(WxHxD):193.6 X 147.6 X 111 mm Display : 4.3 Inch TFT Screen
- Face Capacity: 500 (1:N), ID Card Capacity: 10,000 , Fingerprint Capacity:3,000
- Transaction Storage : 1,00,000
- Camera : High Resolution Infrared Camera
- Communications: RS232 ,RS485, TCP/IP
- Processor: Multi-Bio CPU 800 MHz
- Memory : 256M Flash, 64M SDRAM
- Power Supply: 12V DC ,3A
- Support external 26 bit wiegand reader for exit (KR100/ eSSL101HE)
- Access Control Interface: 3rd party Electric lock, Door Sensor, Exit button
- Alogrithm Version: Face 7.0



Rs.14000/-

Optional:

- Battery at Rs.1000/- extra
- Push Data Technology Rs.2000/-
- Wifi : Rs.2000/- extra,
- GPRS : Rs.6000/-extra
- Face capacity:700(1:G) ,1500/3000(1:1) optional
- Mifare Card ,Short Message,9 Digit User ,Work Code

MULTI BIO 700

- Dimension(WxHxD): 195 X 100 X 275 mm , Display : 4.3 Inch Touch Screen
- Fingerprint Capacity: 2000 , Face Capacity: 500 , ID Card Capacity: 10,000
- Transaction Storage : 10,000
- Camera : High Resolution Infrared Camera
- Communications: RS232 ,RS485, TCP/IP ,USB-HOST
- Processor: Multi-Bio CPU 800 MHz
- Memory : 256M Flash, 64M SDRAM
- Support external 26 bit wiegand reader for exit (KR100/ eSSL101HE)
- Access Control Interface: 3rd party Electric lock , Door Sensor ,Exit button ,Wired Bell
- Power Supply: 12V DC ,3A
- Optional Function: ID Card ,Mifare Card ,Work Code ,9 Digit User
- Alogrithm Version: Face 7.0



Rs.14000/-

HOTEL LOCKS/ RESIDENTIAL LOCKS

- Dimension(LxWxH): 146.5 X 70.0 X 260 mm
- Lead Indicator: Green & Red , Beeper : Yes
- Material : Zinc Alloy
- Mortise : U.S. Mortise with 5 latches
- Encoder : Mifare
- Operating System : Windwos Xp/Vista/Win 7
- Type Of Card : 13.56 MHz Mifare ,
- Temperature : 0°C - 45°C
- Operating Humidity : 20%-80%
- Low battery warning voltage : 4 x1.5 V AA Battery
- Power input : 4 x 1.5V AA Battery
- Backup Unlock Mechanism : Mechanical key



LH4000



LH5000

Optional:

- Software with MiFare reader :Rs.9000/-
- Energy saver switch with MiFare reader writer : Rs. 1200/-
- Energy saver switch :Rs.785/-

Rs.4895/-

L5000



Rs.10770/-

L7000



Rs.8810/-

SPECIFICATIONS :

- Dimension(LxWxH): 315 X 78 X 88 mm
- Lead Indicator: Green & Red
- Fingerprint Templates : 500 , Event Capacity : 30,000
- Password : 100 , Length of password : 6 to 10 digit
- Front Panel Colors : Black
- Material : Zinc Alloy/Stainless steel finish
- Fingerprint Sensor: Optical Sensor 500 DPI
- Method : Fingerprint (1:1, 1:N), Password & Card
- Communication Model : USB flash disk
- Temperature : 0°C - 45°C
- Operating Humidity : 20%-80%
- Low battery warning voltage : < 4.8 V
- Power input : 4 x 1.5V AA Battery
- Backup Unlock Mechanism : Emergency battery & Mechanical key

Optional :

Mifare Card Reader : Rs.1000/-extra (only L5000)

RFID Card Based Time & Attendance System/Access Control system

K990

- User Capacity: 30,000 Transaction Storage: 1,00,000
- Card Reader: Inbuilt Proximity Card reader
- Color TFT Screen, VGA camera.
- Communications: TCP/IP, RS232/485, and USB
- Support external 26 bit Wiegand reader for exit (KR100/eSSL101HE)
- eTimeTrackLite T&A desktop Software with basic payroll/ Visitor /canteen Management free for 500 users, Supporting database- MS Access /SQL/Oracle
- eTimeTrackLite T&A web based Software trial for 200 Users & 5 devices available Support GPRS & Push Data devices (X990 / U990 / I Clock 990), Supporting database- SQL/Oracle



Optional:

- Internal Battery Back-up(2000MAMP): Rs.1000/-
- Mifare card reader : Rs.1000/- extra and HID (iProx) card reader : Rs.4000/- extra
- Push Data Technology :Rs.2000/- extra
- Wifi : Rs.2000/-extra
- GPRS : Rs.6000/-extra
- Secugen sensor optional @Rs.4000

Rs.7115/-

SC-203 & SC-405

- 32 Bit High speed embedded processor
- Card Capacity: 30,000/- Storage capacity: 50,000/-
- Inbuilt : (Proximity) Card reader
- Supports external 26 bit Wiegand reader for exit
- Communication: TCP/IP and USB Pen drive
- T&A Software with Visitor Management- eTimeTrackLite with MSAccess free for 500 users Also available MS-SQL and Oracle version

Optional:

- Smart Card @ Rs. 1000/- extra
- PSU :12V 1Amp
- PSU :12V 2 Amp

Rs.4740/-



RFID Card Based Time & Attendance System

**K200****K300****S200****S300**

- 32 Bit High speed embedded processor
- 30,000 card capacity & 50000 transaction storage
- Card Reader: Inbuilt EM RFID(Proximity) Card reader
- Communication: TCP/IP
- T&A Software with Visitor Management- eTimeTrackLite with MSAccess free for 500 users. Also available MS-SQL and Oracle version

Optional :

- USB : Rs.500/-extra

Note: K300 is with inbuilt USB at Rs.4770/-

Rs.4270/-

S990

- 32 Bit high speed embedded processor
- 3.0" Digital color TFT
- Users : 30000 & Transaction: 1,00,000
- 500 DPI Optical Sensor
- Communication: TCP/IP,RS232/485/USB
- eTimeTrackLite T&A desktop Software with basic payroll/ Visitor /canteen Management free for 500 users, Supporting database- MS Access /SQL/Oracle
- eTimeTrackLite T&A web based Software trial for 200 Users & 5 devices available Support GPRS & Push Data devices (X990 / U990 / I Clock 990),
- Supporting database- SQL/Oracle

**Rs.5215/-****Optional :**

- Smart Card Reader : Rs.1000/-extra
- Internal Battery Back-up: Rs.1000/-
- Wifi : Rs.2000/-extra
- GPRS : Rs.6000/-extra
- Push Data Technology :Rs.2000/- extra

Biometric Time & Attendance (integrated with Printer)**LP-400**

- Register Capacity:- 3000
- Record Capacity:-100000
- Sensor :500 DPI Optical Sensor
- Identification speed: 1.5sec
- Communications:-TCP/IP & USB
- Card Reader: Inbuilt Proximity Card reader
- Software : T&A Software with Visitor Management eTimeTrackLite with MS Access free for 500 users
- Also available MS-SQL and Oracle version

Optional:-

- Internal Battery Back-up(2000 mamp): Rs.1000/-

**Rs.22300/-**

Door Controller

C3-400 B

- Dimension (L*W*D)mm:- 345*275*70 (with power supply and metal box)
- CPU : - 32bit MIPS CPU
- RAM : - 32M bits
- Flash Memory:- 256M bits
- User:- 30,000
- Event Buffer:-1,00,000
- Reader Port:-Communication:- RS485, TCP/IP
- Support external 26 bit wiegand reader for exit (KR100/eSSL101HE)
- Power / Current:- DC 9.6V-14.4V, Rated Max.1A
- Baud Rate:- 38,400bps (Recommended)
9600bps,19,200bps, 57,600bps (selectable)
- Input Port : 12ea (Exit Button#1, Exit Button#2, Button#3, Button#4,
Door Sensor#1, Door ,Sensor#2, Door Sensor#3, Door Sensor#4,
Aux#1, Aux#2, Aux#3, Aux#4)



Rs.9715/-

INBIO

- Fingerprint capacity:3000
- Card capacity: 30000
- Event buffer: 100000
- Power/current: DC 9.6V-14.4V, rated max0.5A
- Wiegand Reader Port: 4 nos.(26/34bit Wiegand,
4/8bit burst for PIN
- RS485 Reader Port: 1 no. Extended Rs485 Port
- Communication: Rs485, TCP/IP
- Baud Rate : 38,400bps (recommended) / 9600bps,
19,200bps, 57,600bps (selectable)
- Dimensions: (HxWxD) 226x106x36 (single board)
400x330x90.5 (with power supply & metal body)



Rs.3800/-

Rs.12625/-



USB FINGERPRINT READERS

LUMIDIGM M 301

- Resolution : Upto 500 DPI
- Registration Speed : < 0.5 Sec
- Communication Mode : USB
- Fingerprint Sensor: Optical Sensor
- Operating System :Windows 2000 / XP / 2003 / Vista / 7 ,Linux 32 / 64 Bit (optional)
- Temperature : 0°C - 45°C
- Operating Humidity : 10%- 95%
- Power Supply : 5 VDC 400mA (peak)
- Application : Security for PCs and networks ,E-commerce , Banking and financial system security



Rs.7110/-

LUMIDIGM REGULAR

- Resolution 500 dpi
- Temp. (operating) -10-50° C (14-122° F)
- Humidity (operating) 0-100% condensing
- Supply voltage/current +5 VDC 500mA (max)
- Timing -Placement to image: 1.0 seconds (typical)
- Timing -Placement to template 2.0 seconds
- Interfaces: USB 2.0, RS-232
- Housing :Painted magnesium alloy
- Overall dimensions 3.25" W x 3.95" L x 2.31" H
8.3 cm x 10 cm x 5.9 cm



Rs.14000/-

Standalone Single Door Access Control

201- HE

- Size: 87.5 X 109 X 33 mm
- Read Range: Upto 10 cm
- Reading Time (card): <=300ms
- Weight: 150g
- Beeper : Yes
- Temperature : 0°C - 45°C
- Operating Humidity : 20%- 80%
- Power : 12 V DC/Max 70mA
- Input Port: 2ea (External LED Control, External Buzzer Control)
- Card Output: Weigand 26 Bit
- Pin Out: Weigand 8 Bit
- LED Indicator: 2 Color LED Indicators(Red and Green)



Rs.1500/-

RFID Exit Readers

101- HE

- Dimension: 43mm(W) X 80mm(L) X 13mm(T)
- Wgh: 61g
- Power: DC 9~12V, current: 30 -80 m A
- Output: Weigand 26 Bit.
- Working environment: -20°C~60°C,
- relative humidity: 5%--98%



Price (HM): Rs. 1,600/-

Rs.1100/-

KR-101 E

- Dimension: 116*75*16 mm (L*W*T)
- Card Frequency: 125 KHz
- Proximity Range: >=5 cm
- Data Mode: Wiegand 26 bits
- Communication Distance: 100 meters
- LED indicator: Red, Green
- Speed: <= 0.2 sec



Price: Mifare Based (M):1050 /-

Rs.850/-

CR10MW :

- Frequency : 13.5MHz nominal
- Transponder : TK9013 (64 bits,read only,manchester encoded)
- Output interface: RS232,USB
- Power requirements: 5V DC
- Current : 0.1 amp nominal
- Reading distance : 0-7cm
- Power provided : key board
- Data Baud: 9600(bit/sec)
- Storage Temp: -10.c - 85.c
- Dimension:140*100*30mm
- Nominal weight:0.25kg
- Read indication: LED and Beeper.

**Rs.2100/-****Price: Proximity Based CR10E (M):1000 /-****F12****Technical Specification**

- Sensor: optical
- Communication: RS485
- ID Card Module
- Voice Prompt: Buzzer
- Working Voltage: 12VDC
- Working Temperature: 0~ 45.c
- Protection Grade: IP65

**Rs.3800/-**

VIDEO DOOR PHONE

In Door Monitor

- Working voltage: DC18V
- Rated power:8W
- Dimension: 239*139*31.2(mm)
- Operating temperature: -15~+55
- 100pcs images memory with outside SD card (optional)
- Screen:7" LCD (Color)
- Talking mode: bi-directional communication
- 8.Talking time:60s



Out Door Unit

- Working voltage: DC12V
- Rated power:2.5W
- Operating temperature: -20~+70
- Standby power consumption:0.05W
- Camera: ¼ "CCD
- Resolution: 420TVLine bi-directional talking
- Talking mode: bi-directional communication
- Talking time:60s
- Indoor phone capacity: 1~6 sets
- Model size: 92*127*32(mm)



Rs.7250/-

**(Note: Extra Indoor monitor unit Rs. 4550/-)
(Outdoor Camera Unit Rs.2700/-)**

ELECTRONIC SAFE

- Steel thickness-Door/Body:5/2mm
- Outside size: L*W*H*:
16.5"X15"X8.8"(420mm*380mm*255mm)
- Inside size:
16.4"X12.5"X8.7"(416mm*318mm*221mm)
- Packing Size(MM): 465(L),425(W),270(H)
- N/W(Kg):16 , G/W(Kg):16.1



Rs.4700/-

eSSL Bangalore Office :

#24,23rd Main, Marenhalli,
J.P. Nagar 2nd Phase,
Bangalore - 560051
Ph: +91-80-26090500(50 lines)
Fax: +91-80-26590500
Toll No.-18604250099
Email: sales@esslindia.com,
sales@ebiomeindia.com
Website: <http://www.esslindia.com>

eSSL Delhi Office:

#443,Basment,Near Sahai
Hospital, Jangpura (bhogal),
Delhi Mathura Road,
New Delhi-110014

Tel: 91-11-32028622
Mob:91-9312331447

eSSL Germany:

Software Zentrum,
Weinheimer
Strasse 68, 68309
Mannheim. Germany

Ph: +49-621-727 3305,
+49-621-727 3306
Fax: +49-621-727 3419
Email:sales@esslgermany.com

Enterprise Software Solutions Lab (eSSL - Mumbai),

- Grow More Tower, Office no: 121,122,123, 1st floor , Plot No:5, Sector2, Kharghar, Navi Mumbai:410210, Tel: 91-67699000, Mob:91- 9867329459/9320557088.
- Advent Atria, Office no. 102- 1st Floor, Chincholi bunder Road, Malad west, Mumbai, Maharastra - 400064

Kolkata Contact

Ph:91-9483522200

Terms and Conditions:

- ❖ Payment 100% upfront.
- ❖ The prices are exclusive of taxes and freight charges.
- ❖ Materials once sold cannot be taken back.
- ❖ Warranty: 12 Months from invoice date excluding physical damage burnt Items etc.
- ❖ Note: Warranty does not include power supply adaptor, SMPS, UPS, Cards, Exit readers and prism damages.

Note: Prices can change without any prior notice.

Disclaimer:- All Products Specifications correct at the time of publishing. Specification may change without prior notice. Customers are advised to check with before purchases. Actual Product may differ slightly to that depicted for ongoing product development.